

## Foreword

There are two methods for installing the USB driver, one for Windows 2000, and one for Windows XP.

### Trademarks

Microsoft and Windows are trademarks or registered trademarks of Microsoft Corporation in the United States and/or other countries.

### Exemptions

Yokogawa Electric Corporation does not warrant this product after it has been opened, unless there are physical defects in the original setup disk or this document. YOKOGAWA will not accept responsibility for any damage caused directly or indirectly as a result of using this software.

### System Requirements

- **PC**  
PC with a Celeron 800 MHz or faster CPU.
- **Disk Drives**  
One floppy disk drive. This drive is used to install the software.
- **OS**  
Microsoft Windows 2000, or Windows XP.

## Installing the Driver in Windows 2000

First, decompress the compressed file on the hard disk of the PC on which you will perform the installation. The following describes the installation procedure when the compressed file is decompressed in the "C:\yokusbtmc" folder.

### 1. Connecting the DL to the PC with a USB Cable

Turn ON the PC and the instrument. After both devices have completely started up, connect the USB cable. The DL will be automatically detected as a USB device, and the Found New Hardware Wizard will appear as shown below.

Click **Next** to search for drivers for the DL.



## 2. Selecting the Search Method

Select “Search for a suitable driver for my device (recommended),” and click **Next**.



## 3. Specifying the Location of the Driver

Select the “Specify a location” checkbox, then click **Next**.

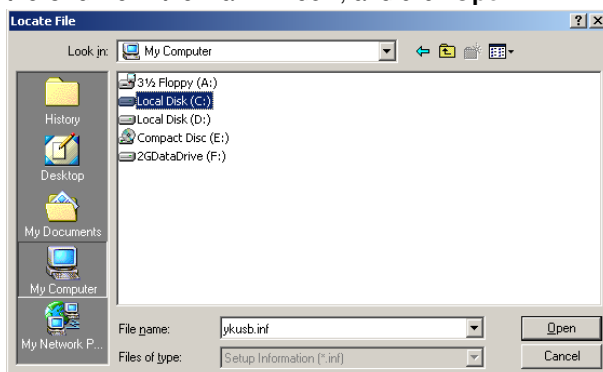


Follow the procedure below to select “YKUSBTMC.inf” file in the “yKUSBTMC” folder that you decompress the compressed file earlier.

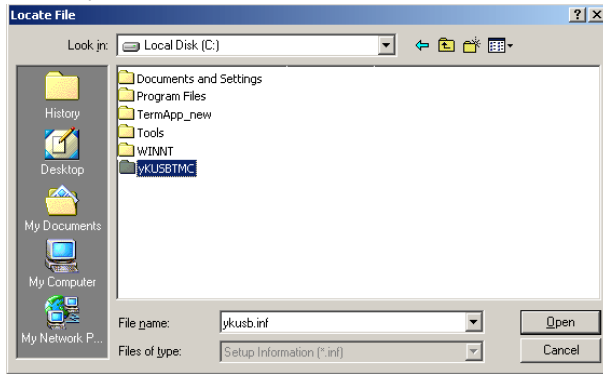
The following dialog box is displayed. Click **Browse**.



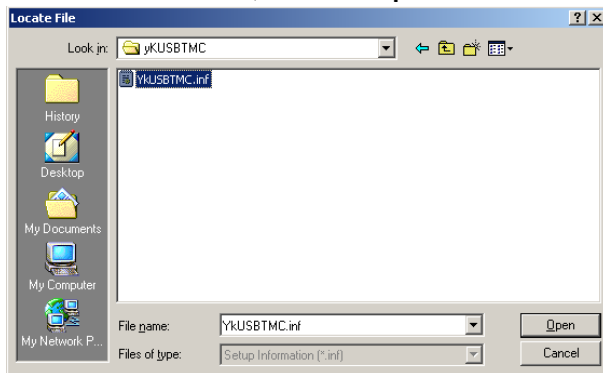
The Locate File dialog box is displayed. Click the My Computer icon on the left side of the dialog box, then select the C: drive in the main window, and click **Open**.



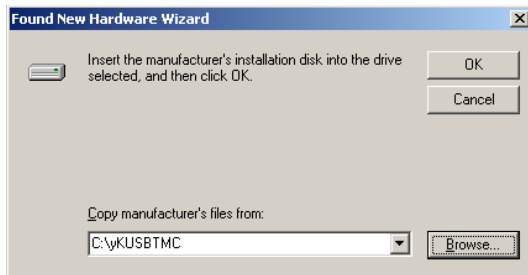
Select "yKUSBTMC," and click **Open**.



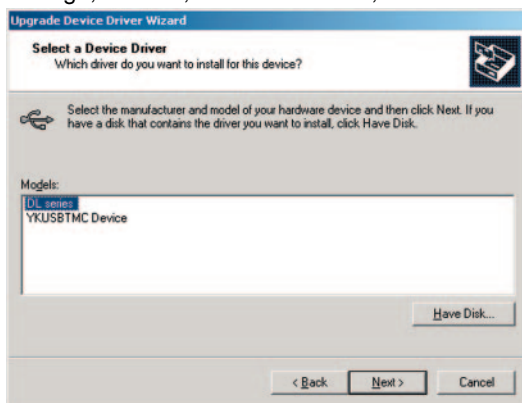
Select "YKUSBTMC.inf," and click **Open**.



You are returned to the Found New Hardware Wizard. Click **OK**.

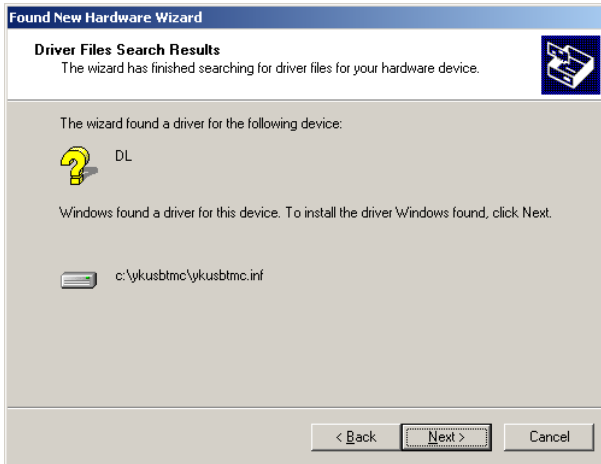


If the Select Device Driver dialog box is displayed and USB Function on the DL9000 is set to TMC & Mass Storage, or TMC, select DL Series, or YKUSBTMC Device, respectively.



#### 4. Installation

Click **Next**. The installation starts.

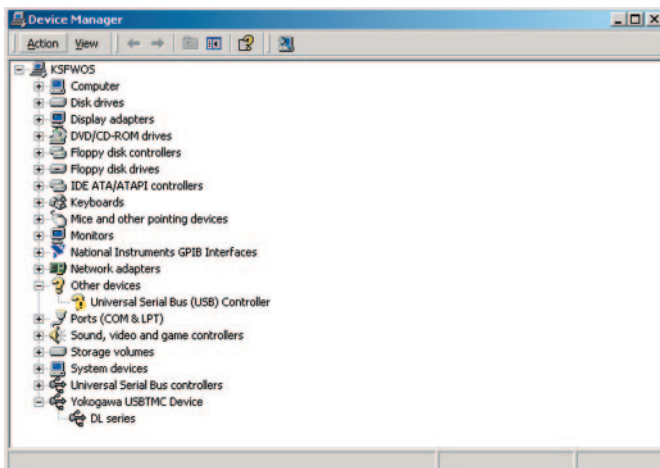


Finally, the following dialog box is displayed. Click **Finish** to close the Wizard.



#### 5. Check that the USB driver was installed.

From the Control Panel, choose "System > Hardware > Device Manager," and check that Yokogawa USBTMC Device has been installed.



---

## Installing the Driver in Windows XP

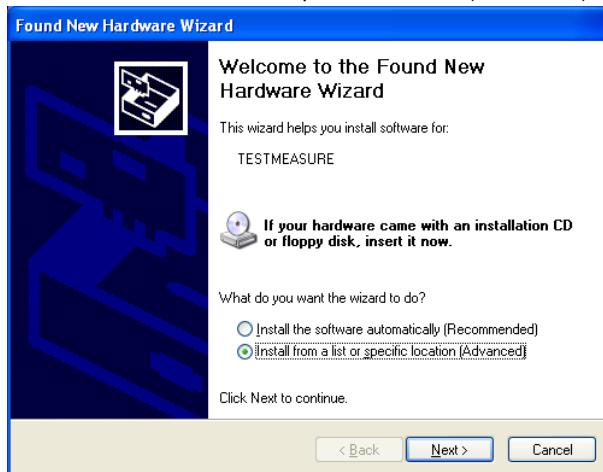
First, decompress the compressed file on the hard disk of the PC on which you will perform the installation. The following describes the installation procedure when the compressed file is decompressed in the "C:\ykusbtmc" folder.

### 1. Connect the DL and the PC using a USB cable.

Turn ON the PC and the DL. After the PC and the DL start up normally, connect the USB cable. As shown below, the DL is automatically detected as a USB device. Press the New Hardware icon

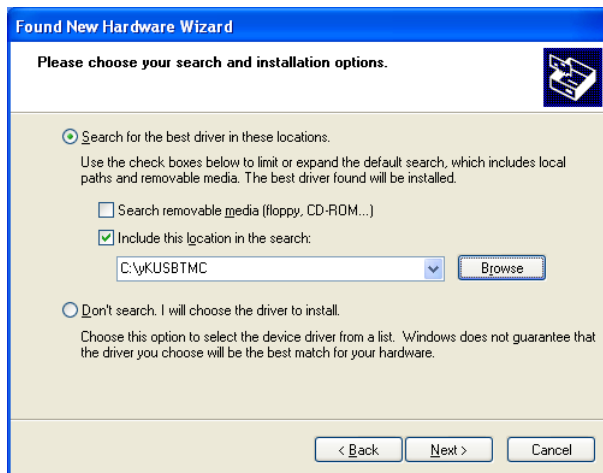


Select "Install from a list or specific location (Advanced)," and then click **Next**.

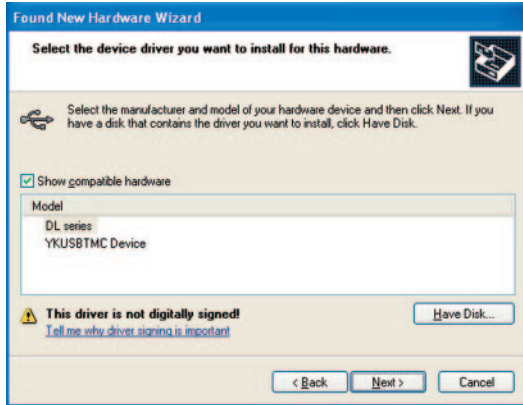


### 2. Specify the driver location and install it.

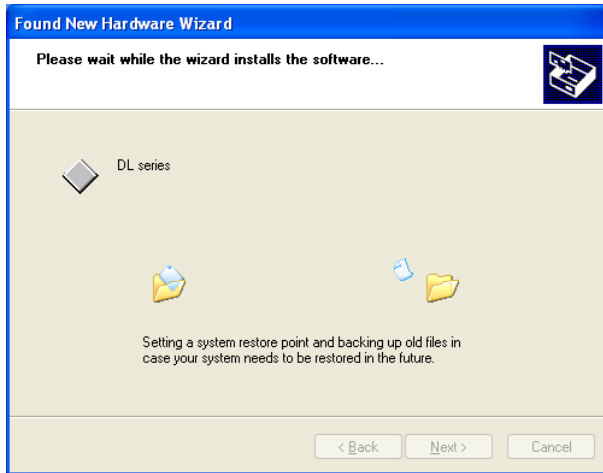
- Select the "Include this location in the search" check box.
- Click **Browse** and select the ykusb folder that you decompressed the compressed file earlier.
- Click **Next**. The installation starts.



If the Select Device Driver dialog box is displayed and USB Function on the DL9000 is set to TMC & Mass Storage, or TMC, select DL Series, or YKUSBTMC Device, respectively.



If normal, the screen shown below appears, and the driver is installed.



---

### 3. Check that the USB driver was installed.

From the Control Panel, choose “System > Hardware > Device Manager,” and check that Yokogawa USBTMC Device has been installed.

